

Show  
**Stine Goya**

Words Kathrine Houe  
Photo Sacha Maric

# Sparkling Rock Cabaret



Where a touch of sexy chic seemed to be the missing link to complete Stine Goya's past collections, it was a whole other story when she presented her fifth and latest collection The Black Spectacle at an over-packed Gallery Show Scene late Thursday night. With a refreshing ability to renew herself without losing her personal style, Goya captivated the spectators with a playful and cabaret-inspired show, featuring girls on swings, live songs by Henrik Hall, and a great hair and make up look that vamped up the girls to the max.

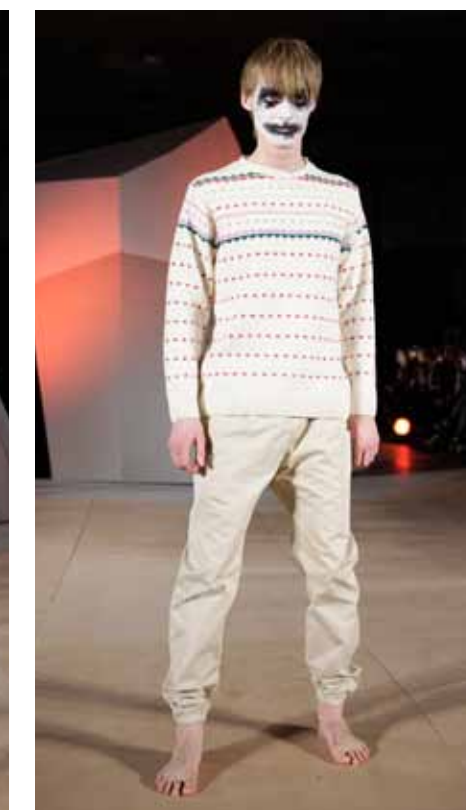
After a spring collection done almost entirely in pastels and grays and with a good amount of prints, the new palette counted mostly black with sparks of shiny bronze, wine red, grey and dark purple, the few prints all rather subtle. Instead, artificial stones gave a lot of the items an appealing sparkle. Shapes were still sculptural and accentuated shoulders and waists, with less oversize styles and a tighter silhouette resulting in a more grown-up and refined expression than previous collections.

Highlights counted several pairs of tights decorated with the sparkling stones, cropped tuxedo-inspired blazers, washed silk dresses with round sculptured shoulders and cape effects, loose leather pants and several versions of the little black dress that would do well at most cocktail parties. All in all it the collection was dominated by a dramatic rocking cabaret edge that was new for Stine Goya but seemed to fit her well.

Show  
**Soulland**

Words Helle Rohde and Mathias Vestergaard  
Photo Sacha Maric

# Modern Horror Grandpa



The scene was set for a bash on Thursday night when Soulland presented its new show 'Savage Mountain'. Located in the raw and industrial Carlsberg Brewery buildings, and with a mountain placed in the center of the catwalk, expectations almost peaked before the show.

The first outfit had a cozy look in nude colors, with chinos teamed up with a knitted cardigan. This classic grandpa look was contrasted by the models' skull painted faces, which left an ambivalent impression of coziness and horror. Basic and wearable items like knitwear, shirts and waistcoats in both bright and pale colors dominated the look. More experimental pieces like knitted pants and a jumpsuit in green gave this increasingly popular streetwear label some extra edge and grit.

The overall impression didn't move mountains, but Soulland still presented a good and varied show with a solid and wearable interpretation of the grandpa look.